



## *Le Boréal, L'Austral, Le Soléal & Le Lyrial:* an ultra-modern and young fleet

These four sisterships, elegant yachts with 122 to 132 cabins and suites, perpetuate our philosophy: limited capacity, unique atmosphere, a subtle combination of luxury, privacy and well-being. Quality materials, discreet refinement, and a natural blend of relaxed elegance, our ships give your customers the chance to enjoy the unique experience of feeling as though they were aboard their own yacht. **Launched between 2010 and 2015**, they form the youngest fleet on the market!

- 122 to 132 cabins and suites (100% with a sea view and 95% with a balcony)
- 244 to 264 guests maximum for 139 crew members
- Refined and welcoming design
- Flexibility with communicating suites for families\*
- Magnificent views over the sea
- 2 restaurants, a gym, hair salon, spa, pool and theatre



\* For safety reasons, the sliding doors must remain open during the cruises when the suites communicate.



## Communal areas

### Reception

135 m<sup>2</sup>  
Reception desk, customer relations, excursions desk

### Restaurants

- **Gastronomic Restaurant**  
370 m<sup>2</sup>  
Capacity: 268 passengers  
Breakfast, lunch and dinner, French and international cuisine.  
List of carefully selected wines
- **Grill Restaurant (Pool Deck)**  
235 m<sup>2</sup>  
Indoor capacity: 90 passengers  
Outdoor capacity: 60 passengers  
Breakfast, buffet lunch and buffet dinner

### Lounges

- **Main Lounge**  
255 m<sup>2</sup>  
Indoor capacity: 110 passengers  
Outdoor capacity: 30 passengers  
Tea service, bar, live music, dance floor  
Access to outdoor terrace
- **Observatory Lounge**  
110 m<sup>2</sup>  
Bar, library, internet zone, live piano music and "Themed Musical Atmospheres" (recorded classical music)  
Direct access to panoramic terrace
- **Outdoor Bar (Deck 7)**  
50 person capacity  
View over the pool deck

### Leisure activities

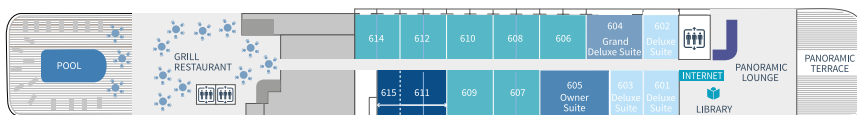
- **Theatre**  
250 m<sup>2</sup>  
Capacity: 250 passengers  
Conference hall  
Performance hall  
Audio-visual equipment
- **Beauty and fitness area**  
Gym Kinesis, treadmill, exercise bike...  
Sothys™ Spa, hair salon, massage booths, balneotherapy booth (on *L'Austral* and *Le Boréal*), hammam, relaxation area
- **Leisure Area**  
Wii™, photo & video area
- **PONANT studio**  
Image and photography area
- **Boutique**

## Amenities

- Individually controlled air-conditioning in each cabin
- Double bed or 2 single beds, depending on the cabin, communicating rooms available (for families with children)\*
- Mini-bar
- Flat-screen TV, satellite television channels
- iPod™ station
- Desk with writing paper
- Electronic safe
- Selection of Hermès toiletries
- Dressing table and hairdryer
- Satellite direct line telephone
- 220-volt sockets
- 24-hour room service
- Internet and Wi-Fi access

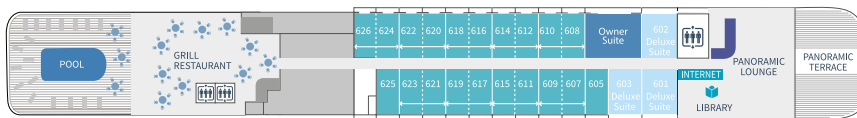
\*For safety reasons, the sliding doors remain open when the suites communicate.

### DECK 6 - LE LYRIAL



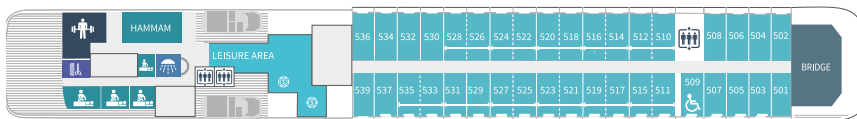
Swimming pool – Grill restaurant – Internet zone – Library – Panoramic lounge – Panoramic terrace

### DECK 6



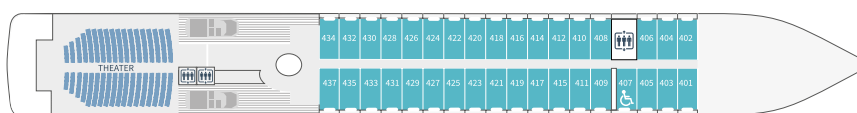
Swimming pool – Grill restaurant – Internet zone – Library – Panoramic lounge – Panoramic terrace

### DECK 5



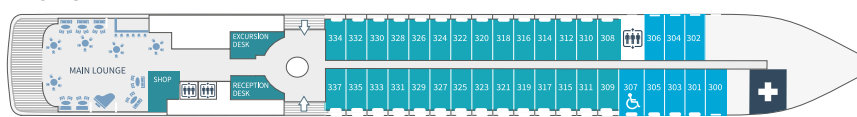
Gym – SOTHYS Spa (hammam, massage booths, hair salon) – Leisure area – Photo centre – Footbridge

### DECK 4



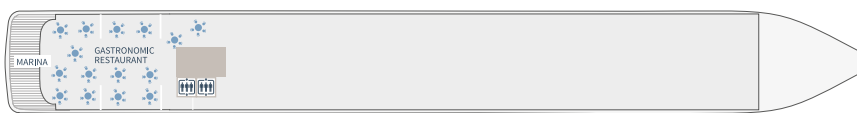
Theatre

### DECK 3



Main Lounge – Shop – Reception – Excursions desk – Medical centre

### DECK 2



Gastronomic restaurant – Marina platform

**Owner's Suite**  
(45 to 54 m<sup>2</sup> and private balcony) Deck 6

**Privilege Suites**  
(37 m<sup>2</sup> and private balcony) Deck 6 - *Le Lyrial*

**Grand Privilege Suite**  
(55.5 m<sup>2</sup> and private balcony) Deck 6 - *Le Lyrial*

**Prestige Suites**  
(37 m<sup>2</sup> and private balcony) Deck 6 - 5 (except *Le Lyrial*)

**Grand Deluxe Suites**  
(45 m<sup>2</sup> and private balcony) Deck 6 - *Le Lyrial*

**Deluxe Suites**  
(28 m<sup>2</sup> and private balcony) Deck 6

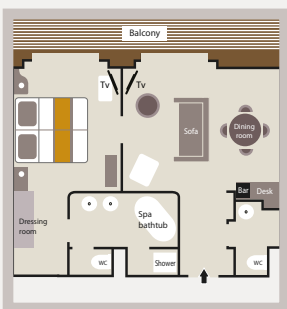
**Prestige Staterooms**  
(18.5 m<sup>2</sup> and private balcony) Deck 4 - 5 - 6

**Deluxe Staterooms**  
(18.5 m<sup>2</sup> and private balcony) Deck 3

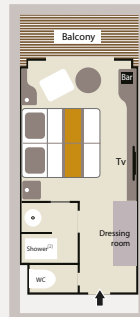
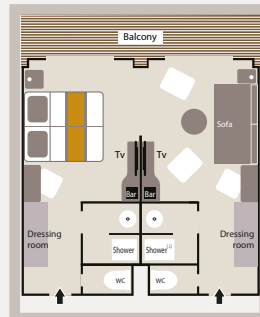
**Superior Staterooms**  
(21 m<sup>2</sup>) Deck 3

## L'Austral, Le Boréal & Le Soléal accommodation

**Owner's Suite**  
(45 m<sup>2</sup> + 9 m<sup>2</sup> private balcony)

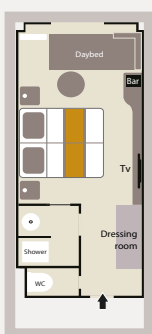


Up to 20 Prestige Suites (37 m<sup>2</sup> + 8 m<sup>2</sup> private balcony)  
Up to 92 Prestige Staterooms (18,5 m<sup>2</sup> + 4 m<sup>2</sup> private balcony)

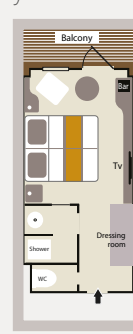


(1) Prestige Suites on board Le Boreál & Le Soleál: 1 shower and 1 bathtub.  
(2) Prestige Stateroom on board Le Boreál & Le Soleál, Decks 5 & 6: 1 shower or 1 bathtub depends on cabins.

**8 Superior Staterooms** (21 m<sup>2</sup>)



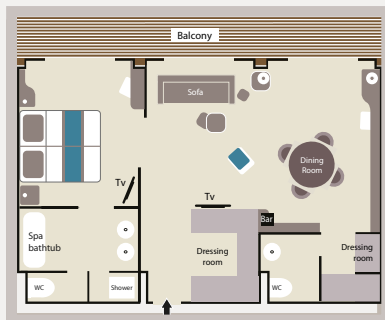
**3 Deluxe Suites** (27 m<sup>2</sup> + 5 m<sup>2</sup> private balcony)  
**28 Deluxe Staterooms** (18,5 m<sup>2</sup> + 4 m<sup>2</sup> private balcony)



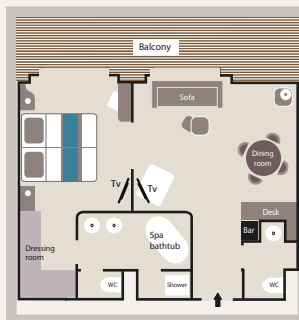
Deluxe Suites aboard Le Boréal and le Soléal: 1 shower and 1 bathtub.

## Le Lyrial accommodation

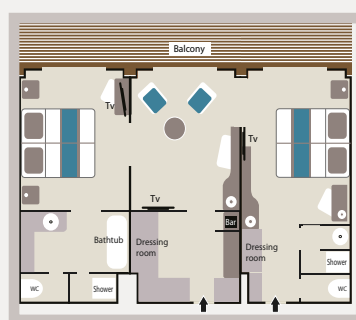
**Owner's Suite**  
(54 m<sup>2</sup> + 12 m<sup>2</sup> private balcony)



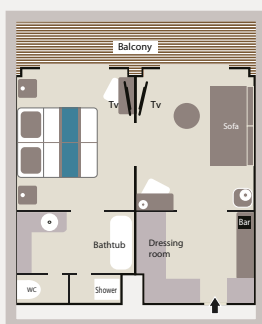
**Grand Deluxe Suite**  
(45 m<sup>2</sup> + 10 m<sup>2</sup> private balcony)



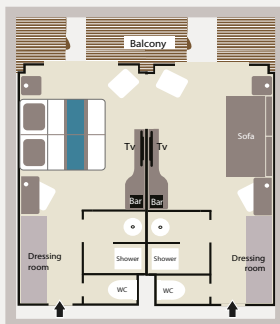
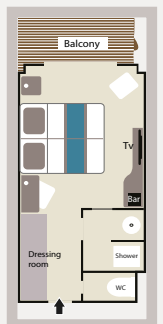
**Grand Privilege Suite**  
(54 m<sup>2</sup> + 12 m<sup>2</sup> private balcony)



**8 Privilege Suites**  
(36 m<sup>2</sup> + 8 m<sup>2</sup> private balcony)



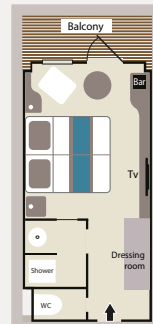
**73 Prestige Staterooms** (18 m<sup>2</sup> + 4 m<sup>2</sup> private balcony)  
**11 Prestige Suites** (36 m<sup>2</sup> + 8 m<sup>2</sup> private balcony)



**3 Deluxe Suites**  
(27 m<sup>2</sup> + 6 m<sup>2</sup> private balcony)



**28 Deluxe Staterooms** (18 m<sup>2</sup> + 4 m<sup>2</sup> private balcony)



**8 Superior Staterooms**  
(21 m<sup>2</sup>)

