



Ruta 40[®]
INDEPENDENT
TRAVEL DESIGNERS



Le Commandant-Charcot, the world's first luxury polar exploration vessel

An hybrid propulsion combining liquefied natural gas (LNG)
and electric generators

Le Commandant-Charcot has been designed to minimise the environmental impact of travel in the furthest latitudes. It will also host a scientific research laboratory equipped to study the ecosystems and biodiversity of this polar setting in perpetual change.

A responsible naval conception

Mode of propulsion, energy optimisation, cutting-edge technologies, choice of fuels... PONANT is increasingly establishing itself as a pioneering ship-owner in the conception and operation of ships.

Le Commandant-Charcot, like all our ships, will be “clean ship” certified, exceeding the currently applicable environmental regulations:

- Reduction of SOx, Nox, CO2 and particle emissions thanks to the use of LNG
- Digital navigation assistance to reduce fuel consumption
- Optimised power output
- Zero emissions and noise reduction in hybrid electric mode
- Recycling of waste
- Advanced wastewater treatment system



Powered by
liquified natural Gas
(LNG)



Energy Optimisation
System



Latest generation
electric batteries
to reduce energy
consumption



Advanced Wastewater
Treatment System



Waste Heat Recovery
System

PONANT is a full and proud member of the International Association of Antarctica Tour Operators (IAATO). IAATO is an industry group organisation that sets the highest possible tourism operating standards in an effort to ensure appropriate, safe and environmentally sound travel to Antarctica. Its rules include guidelines about the maximum number of guests during shore landings, and other specific guidelines about wildlife watching, visitor briefings and key safety obligations on operators.

In the Arctic, PONANT is a member of AECO, the Association of Arctic Expedition Cruise Operators. AECO is dedicated to managing responsible, environmentally friendly and safe tourism in the Arctic.

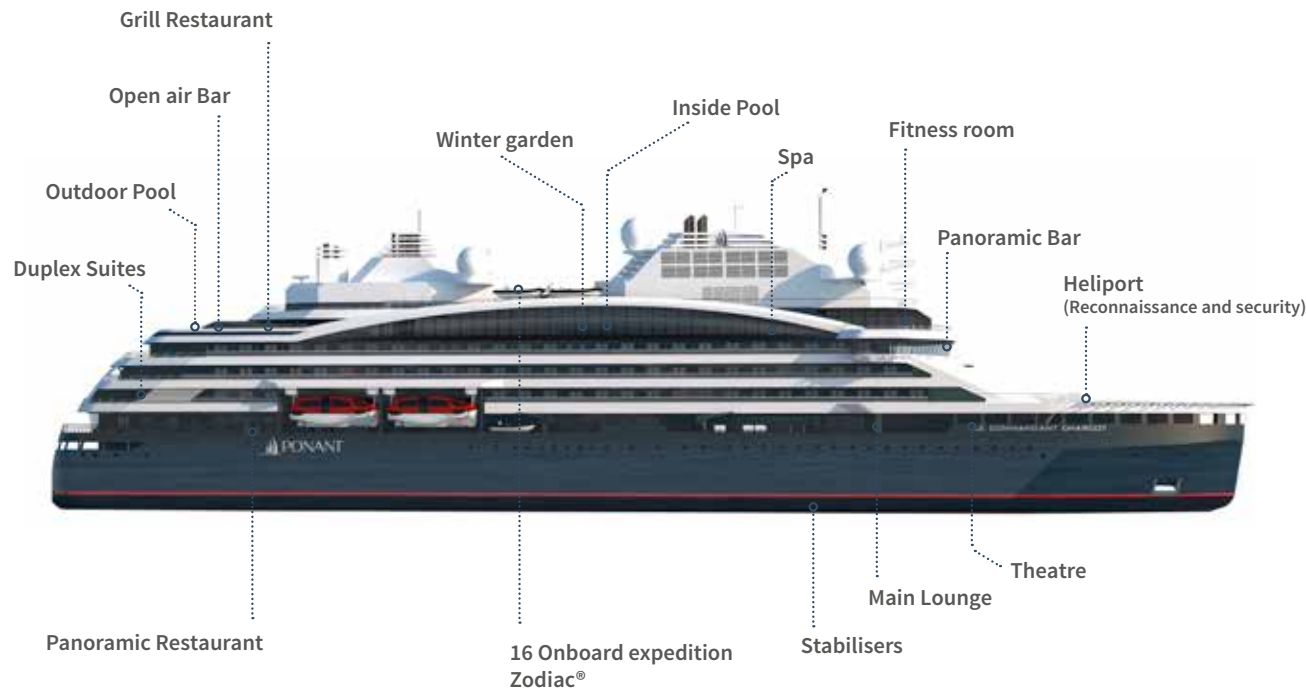


Association of
Arctic Expedition Cruise
Operators **AECO**



A technological revolution

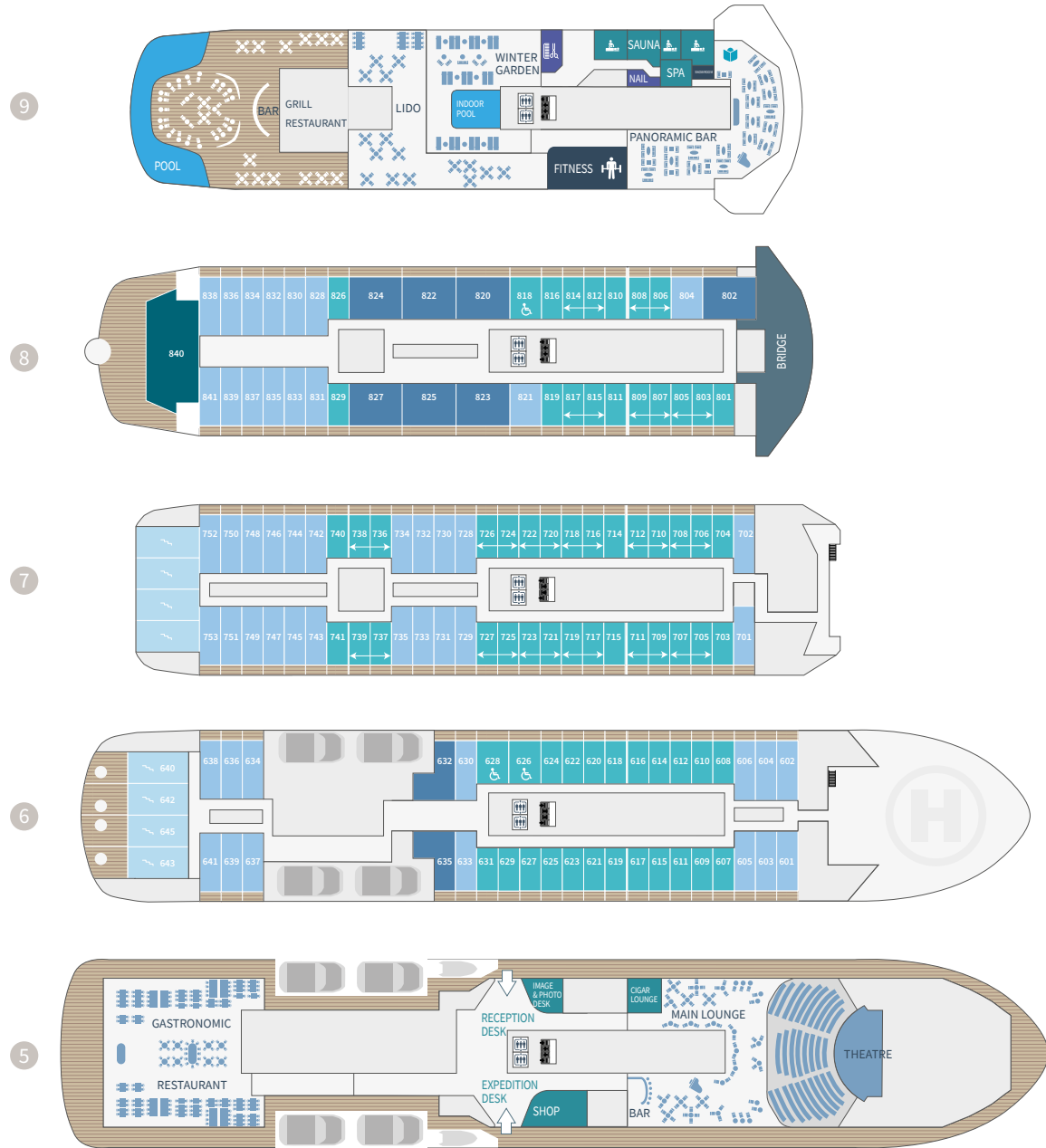
To design this exceptional polar vessel, PONANT joined forces with **Aker Arctic**, global specialist in ice-sailing technologies. The PC2 polar hull of this hybrid ship was specially developed with an innovative design, making it the most powerful High Polar Exploration Vessel in the world. As a result, *Le Commandant-Charcot* will be able to achieve unrivalled sailing performances, even in the most difficult conditions imposed by these challenging environments.



Technical specifications

Length:	150 m
Width:	28 m
Draught:	10 m
Ice Class:	PC2
Propulsion:	LNG & Hybrid Electric
Shipyard:	VARD
Classification:	Bureau Veritas
Flag:	French
Crew members:	190
Onboard expedition Zodiac® dinghies:	16
Staterooms and Suites:	135 (including 31 suites)
Panoramic Restaurant:	1
Grill Restaurant:	1
Pool area:	2 (Indoor Pool and winter garden, Outdoor Pool)
Spa, Sauna, Fitness room:	1

Deck Plans*

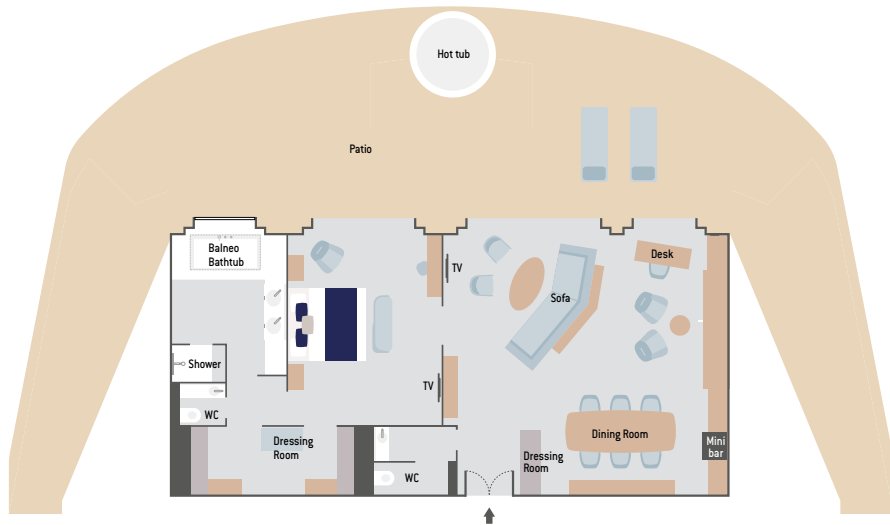


- 9 Grill Restaurant – Lido – Panoramic Bar and Lounge – Fitness – PONANT Yacht SPA (Snow-Room – Massage Rooms – Sauna – Nail Shop – Hairdresser) – Winter Garden – Pools (Inside and Outside) – Open-air Bar – Library
- 8 Owner’s Suite – 14 Privilege Staterooms – 7 Privilege Suites – 18 Prestige Staterooms (including 1 for person of reduced mobility and 10 Prestige Staterooms convertible into 5 Prestige Suites) – Bridge
- 7 22 Privilege Staterooms – 30 Prestige Staterooms (including 24 Prestige Staterooms convertible into 12 Prestige Suites)
- 6 4 Duplex Suites – 2 Privilege Suites – 14 Privilege Staterooms – 23 Prestige Staterooms (including 2 Prestige Staterooms for person of reduced mobility)
- 5 Gastronomic Restaurant – Theatre – Main Lounge – Cigar Lounge – Shop – Reception Desk – Expedition Desk – Image & Photo Desk
- 4 Medical centre

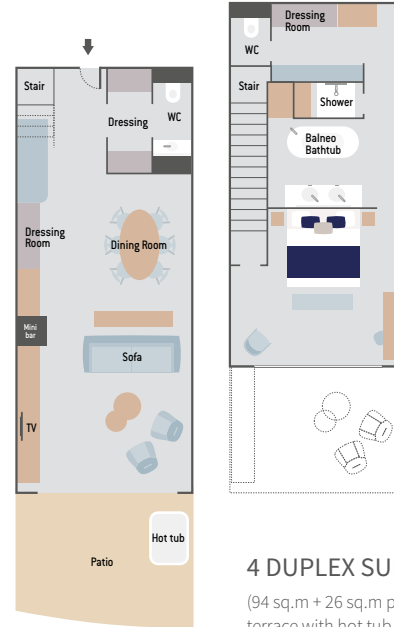
- Prestige Stateroom (Deck 6 - 7 - 8)
- Privilege Stateroom (Deck 6 - 7 - 8)
- Prestige Suite (Deck 7 - 8)
- Privilege Suite (Deck 6 - 8)
- Duplex Suite
- Owner's Suite

(*Non-contractual plans, ship under construction)

Stateroom Plans*

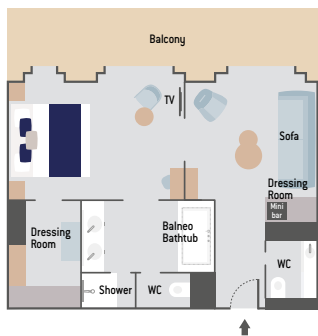


OWNER'S SUITE (115 sq.m +186 sq.m private terrace with hot tub - Balneo bathtub) / (1237 sq.ft +2002 sq.ft private terrace with hot tub - Balneo bathtub)

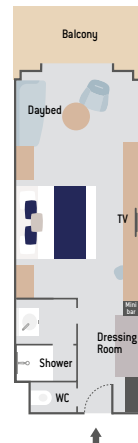


4 DUPLEX SUITES
(94 sq.m + 26 sq.m private terrace with hot tub - Balneo bathtub) / (1011 sq.ft + 279 sq.ft private terrace with hot tub - Balneo bathtub)

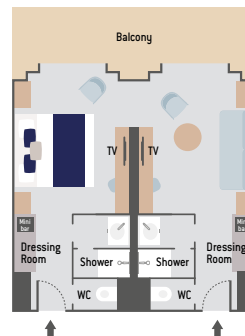
9 PRIVILEGE SUITES
(48 sq.m + 12.5 sq.m private balcony - Balneo bathtub) / (516 sq.ft + 134.5 sq.ft private balcony - Balneo bathtub)



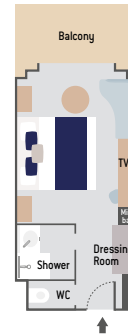
50 PRIVILEGE STATEROOMS
(28 sq.m + 5 sq.m private balcony) / (301 sq.ft + 53 sq.ft private balcony)



17 PRESTIGE SUITES
(40 sq.m + 10 sq.m private balcony) / (430 sq.ft + 107 sq.ft private balcony)



71 PRESTIGE STATEROOMS
(20 sq.m + 5 sq.m private balcony) / (215 sq.ft + 53 sq.ft private balcony)



(*Non-contractual plans, ship under construction)

Public areas:

LOBBY 177 sq.m / 1905 sq.ft - Reception/concierge desk, expeditions desk, Hospitality & Travel Manager office, boutique, image & photo desk

LOUNGES

- **Main Lounge** 302 sq.m – 3250 sq.ft and 28 sq.m - 301 sq.ft - Cigar lounge - Afternoon tea, lounge, live music on selected evenings.
- **Panoramic Bar and Lounge** 400 sq.m - 4305 sq.ft - Capacity: 88
- **Open-air Bar**

RESTAURANTS

- **Gastronomic Restaurant** 484 sq.m - 5209 sq.ft - Capacity: 284
Elegant main dining room for breakfast, lunch and dinner serving French and international cuisine, fine wine cellar.
- **Grill Restaurant – Lido** 320 sq.m - 3444 sq.ft - Outside capacity Grill: 62
Outside capacity Lido: 70 - Inside capacity: 150 Casual eating venue for breakfast, buffet lunch and themed dinner

RECREATION / RELAXATION

- **16 Zodiac®**
- **Fitness & Beauty Corner:** Fitness room: Elliptic, running machines, bicycles... Beauty Corner: Hairdresser, Massage rooms, Sauna, Snow-Room, Nail Shop.
- **Pool area:** Indoor Pool and winter garden - Outdoor Pool
- **Theatre:** Capacity: 270-276 - Main show room for conferences and live entertainment on selected evenings - State-of-the-art audio and video technology
- **Leisure area:** Public areas - Library - Medical centre

Amenities:

- Balcon or Terrace (Duplex Suites, Owner's Suite)
- Individually-controlled airconditioning
- Stateroom layout: king-size bed, or twin beds, communicating Staterooms available, children welcome
- Minibar - 24hr room service
- Flat screen satellite TV
- Video on demand
- iPod™ docks
- Safe
- French bath products
- Dressing table, bath robes, Hairdryer
- Direct line telephone
- 110V American (two flat pins)/220V European (round sockets with two round pins)
- Internet access Wifi
- Butler service (Owner's Suite, Duplex Suites, Privilege Suites)