

Falkland Islands - South Georgia - Solar Eclipse - Antarctic Peninsula

PLA...

Nov 23 – Dec 12, 2021

19 nights

Ushuaia - Ushuaia

OTL...

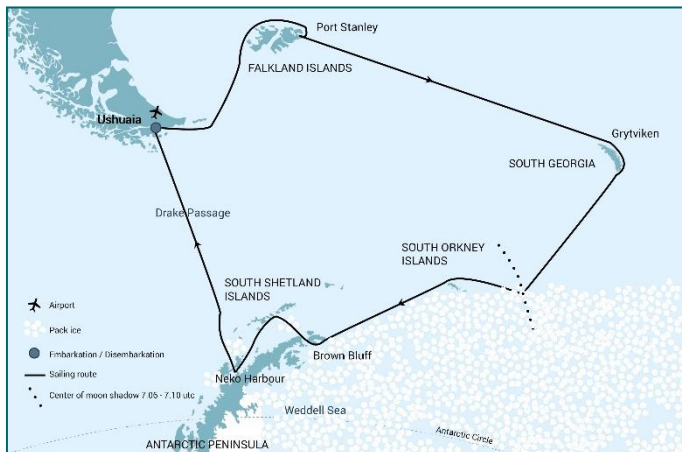
Nov 24 – Dec 13, 2021

19 nights

aboard Plancius

aboard Ortelius

All itineraries are for guidance only. Programs may vary depending on local ice and weather conditions and in order to take advantage of opportunities to see wildlife. The on-board expedition leader determines the final itinerary. Itineraries may mention places that require permission to land, which must be granted by the relevant national authorities. Such permission is not granted prior to the publishing of these itineraries. Flexibility is paramount for expedition cruises. The average cruising speed of m/v Plancius and m/v Ortelius is 10.5 knots.


Day 1: End of the world, start of a journey

Your voyage begins where the world drops off. Ushuaia, Argentina, reputed to be the southernmost city on the planet, is located on the far southern tip of South America. Starting in the afternoon, you embark from this small resort town on Tierra del Fuego, nicknamed “The End of the World,” and sail the mountain-fringed Beagle Channel for the remainder of the evening.

Day 2: The winged life of the westerlies

Several species of albatross follow the vessel into the westerlies, along with storm petrels, shearwaters, and diving petrels.

Day 3: Finding the Falklands

The Falkland (Malvinas) Islands offer an abundance of wildlife that is easily approachable, though caution is always advised. These islands are largely unknown gems, the site of a 1982 war between the UK and Argentina. Not only do various species of bird live here, but chances are great you’ll see both Peale’s dolphins and Commerson’s dolphins in the surrounding waters.

During this part of the voyage, you may visit the following sites:

Carcass Island – Despite its name, this island is pleasantly rodent-free and hence bounteous with birdlife. Anything from breeding Magellanic penguins and gentoos to numerous waders and passerine birds (including Cobb’s wrens and tussock-birds) live here.

Saunders Island – On Saunders Island you can see the black-browed albatross and its sometimes-clumsy landings, along with breeding imperial shags and rockhopper penguins. King penguins, Magellanic penguins, and gentoos are also found here.

Day 4: Porting in Port Stanley

The capital of the Falklands and center of its culture, Port Stanley offers a little Victorian-era charm: colorful houses, well-tended gardens, and English-style pubs are all to be found here. You can also see several century-old clipper ships nearby, silent witnesses to the hardships of 19th century sailors. The small but interesting museum is also worth a visit, covering the early days of settlement up to the Falklands War. Approximately 2,100 people live in Port Stanley. Feel free to wander at will, though be aware that admission fees to local attractions are not included in the voyage.

Day 5 – 6: Once more to the sea

On the way to South Georgia, you cross the Antarctic Convergence. The temperature gradually cools, and nutritious water rises to the surface of the sea due to colliding water columns. This phenomenon sometimes attracts a multitude of seabirds near the ship, including several species of albatross, shearwaters, petrels, prions, and skuas.

Day 7 – 10 (Day 7 – 9 on Ortelius): South Georgia journey

Today you arrive at the first South Georgia activity site. Please keep in mind that weather conditions in this area can be challenging, largely dictating the program.

You may visit the following sites over the next few days:

Fortuna Bay – Near beaches inhabited by various penguins and seals, you have the chance to follow the final leg of Shackleton’s route to the abandoned whaling village of Stromness. This path cuts across the mountain pass beyond Shackleton’s Waterfall, and as the terrain is partly swampy, be prepared to cross a few small streams.

Salisbury Plain, St. Andrews Bay, Gold Harbour – These sites not only house the three largest king penguin colonies in South Georgia, they’re also three of the world’s largest breeding beaches for southern elephant seals. Only during this time of year do they peak in their breeding cycle. Watch the four-ton bulls keep a constant vigil (and occasionally fight) over territories where dozens of females have just given birth or are about to deliver. You can also see a substantial number of Antarctic fur seals here during the breeding season (December – January).

Grytviken – In this abandoned whaling station, king penguins walk the streets and elephant seals lie around like they own the place – because they basically do. Here you might be able to see the South Georgia Museum as well as Shackleton’s grave.

Cooper Bay – A Zodiac cruise in Cooper Bay offers a great opportunity to see macaroni penguins below a large rookery. Numerous fur and elephant seals are found on the beach, while majestic light-mantled albatrosses can be seen gracefully gliding above.

Day 11 (Day 10 on Ortelius): Southward bound

There may be sea ice on this route, and at the edge of the ice some south polar skuas and snow petrels could join the other seabirds trailing the vessel south.

Day 12 (Day 11 on Ortelius): Weddell Sea pack ice & total solar eclipse (Dec 4, early morning)

The ship positions itself in the center of the shadow of the moon, and if possible, some distance into the Scotia Sea drift ice. The ice edge will be about 60°S, 41°W.

Some coordinates for the path of the moon’s shadow:

7.06 UTC: 58.47.7 S – 42.45.2 W, 1.39 minutes, 8 degrees above horizon

7.08 UTC: 60.42.4 S – 40.59.8 W, 1.42 minutes, 9 degrees above horizon

7.10 UTC: 62.22.3 S – 39.48.0 W, 1.44 minutes, 11 degrees above horizon

Day 13 – 14 (Day 12 – 13 on Ortelius): Last push to Antarctica

Enormous icebergs and a fair chance of fin whale sightings ensure there’s never a dull moment on this last sea voyage south. Also, your best chance to spot Antarctic petrels is here.

Day 15 – 17 (Day 14 – 17 on Ortelius): Awe-inspiring Antarctica

If the ice conditions permit, you now sail into the Weddell Sea. Here colossal tabular icebergs herald your arrival to the eastern side of the Antarctic Peninsula. Paulet Island, with its large population of Adélie penguins, is a possible stop. You might also visit Brown Bluff, located in the ice-clogged Antarctic Sound, where you could get the chance to set foot on the Antarctic Continent itself.

If conditions aren’t favorable to enter the Weddell Sea from the east, the ship will set course for Elephant Island and head into the Bransfield Strait, between South Shetland Island and the Antarctic Peninsula. Here you can attempt to access the Antarctic Sound from the northwest.

The volcanic islands of the South Shetlands are windswept and often cloaked in mist, but they nonetheless offer many subtle pleasures. A wide variety of flora (mosses, lichens, flowering grasses) and fauna (gentoo penguins, chinstrap penguins, southern giant petrels) live here.

On Deception Island, the ship plunges through Neptune’s Bellows and into the flooded caldera. If a landing here is possible, you will find hot springs, an abandoned whaling station, and thousands of cape petrels. A number of kelp gulls, brown skuas, south polar skuas, and Antarctic terns can be spotted here too.

Your last activities before venturing into the Drake Passage are likely to find you around the northern Gerlache Strait. One option is Cierva Cove and the rugged, ice-gripped mountains of the Davis Coast. Mikkelsen Harbour on the south coast of Trinity Island is another alternative. Here you may enjoy a gentoo penguin rookery as well as some fine scenic cruising.

Conditions on the Drake Passage determine the exact time of departure.

Day 18 – 19 North by sea

Your return voyage is far from lonely. While crossing the Drake, you're greeted by a vast array of seabirds. But they seem a little more familiar to you now, and you to them.

Day 20: There and back again

Every adventure, no matter how grand, must eventually come to an end. It's now time to disembark in Ushuaia, but with memories that will accompany you wherever your next adventure lies.

Antarctic Peninsula - Solar Eclipse - South Georgia - Falkland Islands

HDS...

Nov 26 – Dec 15, 2021

19 nights

Ushuaia - Ushuaia

aboard Hondius

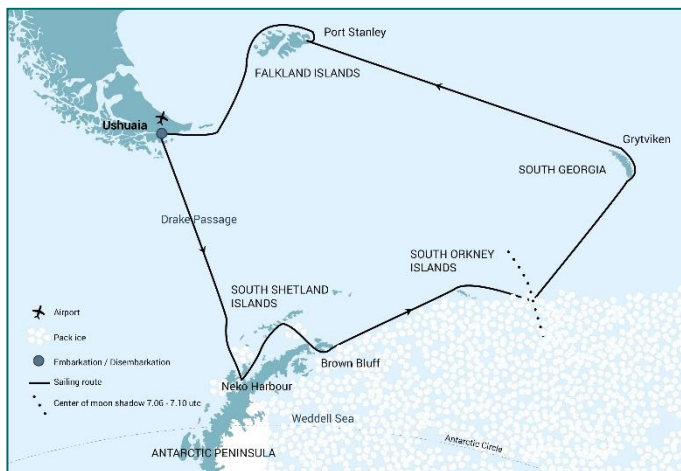
JNS..

Nov 25 – Dec 14, 2021

19 nights

aboard Janssonius

All itineraries are for guidance only. Programs may vary depending on local ice and weather conditions and in order to take advantage of opportunities to see wildlife. The on-board expedition leader determines the final itinerary. Itineraries may mention places that require permission to land, which must be granted by the relevant national authorities. Such permission is not granted prior to the publishing of these itineraries. Flexibility is paramount for expedition cruises. The average cruising speed of m/v Hondius and m/v Janssonius is 10.5 knots.



Day 1: End of the world, start of a journey

Your voyage begins where the world drops off. Ushuaia, Argentina, reputed to be the southernmost city on the planet, is located on the far southern tip of South America. Starting in the afternoon, you embark from this small resort town on Tierra del Fuego, nicknamed "The End of the World," and sail the mountain-fringed Beagle Channel for the remainder of the evening.

Day 2 – 3: Path of the polar explorers

Over the next two days on the Drake Passage, you enjoy some of the same experiences encountered by the great polar explorers who first charted these regions: cool salt breezes, rolling seas,

maybe even a fin whale spouting up sea spray. After passing the Antarctic Convergence – Antarctica's natural boundary, formed when north-flowing cold waters collide with warmer sub-Antarctic seas – you are in the circum-Antarctic upwelling zone. Not only does the marine life change, the avian life changes too. Wandering albatrosses, grey-headed albatrosses, black-browed albatrosses, light-mantled sooty albatrosses, cape pigeons, southern fulmars, Wilson's storm petrels, blue petrels, and Antarctic petrels are a few of the birds you might see.

Day 4 – 6 (Day 4 – 7 on Janssonius): Entering Antarctica

This extended voyage gives you the chance to sail even farther down the icy coast of the western Antarctic Peninsula. In the Gerlache Strait are several opportunities for great landings where you might set foot on the Antarctic Continent, surrounded by an epic landscape of alpine peaks and mammoth glaciers calving at sea level. Gentoo penguins, leopard seals, Weddell seals, humpback whales, and minke whales are often seen here.

The volcanic islands of the South Shetlands are windswept and often cloaked in mist, but they nonetheless offer many subtle pleasures. A wide variety of flora (mosses, lichens, flowering grasses) and fauna (gentoo penguins, chinstrap penguins, southern giant petrels) live here.

On Deception Island, the ship plunges through Neptune's Bellows and into the flooded caldera. Here you can find hot springs, an abandoned whaling station, and thousands of cape petrels. A number of kelp gulls, brown skuas, south polar skuas, and Antarctic terns can be spotted here too.

If ice permits, you sail into the Weddell Sea. Here colossal tabular icebergs herald your arrival to the eastern side of the Antarctic Peninsula. You might visit Brown Bluff, located in the ice-clogged Antarctic Sound, where you could get the chance to set foot on the continent. Paulet Island, with its large population of Adélie penguins, is another possible stop.

Day 7 – 8 (Day 8 – 9 on Janssonius): East to the eclipse

Giant icebergs and a good chance of fin whale sightings enliven this segment of the voyage. Also, your best chance to spot Antarctic petrels is here. Depending on ice and weather conditions, the aim is to venture into the pack ice to find the best possible position for viewing the solar eclipse.

Day 9 (Day 10 on Janssonius): Weddell Sea pack ice & total solar eclipse (Dec 4, early morning)

The ship positions itself in the center of the shadow of the moon, and if possible, some distance into the Scotia Sea drift ice. The ice edge will be about 60°S, 41°W.

Some coordinates for the path of the moon's shadow:

7.06 UTC: 58.47.7 S – 42.45.2 W, 1.39 minutes, 8 degrees above horizon

7.08 UTC: 60.42.4 S – 40.59.8 W, 1.42 minutes, 9 degrees above horizon

7.10 UTC: 62.22.3 S – 39.48.0 W, 1.44 minutes, 11 degrees above horizon

Day 10 (Day 11 on Janssonius): Northward bound

There may be sea ice on this route, and at the edge of the ice some south polar skuas and snow petrels could join the other seabirds trailing the vessel north.

Day 11 – 14 (Day 12 – 14 on Janssonius) : South Georgia journey

Today you arrive at the first South Georgia activity site. Please keep in mind that weather conditions in this area can be challenging, largely dictating the program.

Over the next several days, you may visit the following sites:

Cooper Bay – A Zodiac cruise in Cooper Bay offers a great opportunity to see macaroni penguins below a large rookery. Numerous fur and elephant seals are found on the beach, while majestic light-mantled albatrosses can be seen gracefully gliding above.

Grytviken – In this abandoned whaling station, king penguins walk the streets and elephant seals lie around like they own the place – because they basically do. Here you might be able to see the South Georgia Museum as well as Shackleton's grave.

Fortuna Bay – Near beaches inhabited by various penguins and seals, you have the chance to follow the final leg of Shackleton's route to the abandoned whaling village of Stromness. This path cuts across the mountain pass beyond Shackleton's Waterfall, and as the terrain is partly swampy, be prepared to cross a few small streams.

Salisbury Plain, St. Andrews Bay, Gold Harbour – These sites not only house the three largest king penguin colonies in South Georgia, they're also three of the world's largest breeding beaches for southern elephant seals. Only during this time of year do they peak in their breeding cycle. Watch the four-ton bulls keep a constant vigil (and occasionally fight) over territories where dozens of females have just given birth or are about to deliver. You can also see a substantial number of Antarctic fur seals here during the breeding season (December – January).

Day 15 – 16: Once more to the sea

On the way to South Georgia, you cross the Antarctic Convergence. The temperature gradually cools, and nutritious water rises to the surface of the sea due to colliding water columns. This phenomenon sometimes attracts a multitude of seabirds near the ship, including several species of albatross, shearwaters, petrels, prions, and skuas.

Day 17: Porting in Port Stanley

The capital of the Falklands and center of its culture, Port Stanley offers a little Victorian-era charm: colorful houses, well-tended gardens, and English-style pubs are all to be found here. You can also see several century-old clipper ships nearby, silent witnesses to the hardships of 19th century sailors. The small but interesting museum is also worth a visit, covering the early days of settlement up to the Falklands War. Approximately 2,100 people live in Port Stanley. Feel free to wander at will, though be aware that admission fees to local attractions are not included in the voyage.

Day 18: Finding the Falklands

The Falkland (Malvinas) Islands offer an abundance of wildlife that is easily approachable, though caution is always advised. These islands are largely unknown gems, the site of a 1982 war between the UK and Argentina. Not only do various species of bird live here, but chances are great you'll see both Peale's dolphins and Commerson's dolphins in the surrounding waters.

Day 19: The winged life of the westerlies

Several species of albatross follow the vessel into the westerlies, along with storm petrels, shearwaters, and diving petrels.

Day 20: There and back again

Every adventure, no matter how grand, must eventually come to an end. It's now time to disembark in Ushuaia, but with memories that will accompany you wherever your next adventure lies.